

Summary of Trends in the North Central Workforce Area

Profile of Unemployment Insurance Claimants

- A total of 2,908 individuals were continuing to collect Unemployment Insurance in the North Central Mass Workforce Area during November 2006, with 31.7% collecting for at least 15 weeks. The percentage collecting for 15+ weeks in North Central Mass was slightly below the state percentage of 32.6%.
- Among the UI Claimants in North Central Mass, 30.8% earned less than \$500/week on their previous job compared to 31.5% for Massachusetts as a whole. By contrast, nearly one quarter (24.2%) of the North Central Mass claimants had weekly wages in excess of \$1000/week as opposed to 26.6% across the entire Commonwealth.
- With regard to age, 44.3% of the North Central Mass claimants were 45 years or older which was essentially the same as the statewide share of 44.1%.
- Within the North Central Mass claimant population, 11.2% were high school dropouts, which was below the statewide share of 12.2%. Conversely, just 17.5% of the North Central Mass claimants possessed at least a Bachelor's Degree as compared to 22.7% for the state as a whole.
- The largest occupational category, Production, accounted for 1 in 5 claimants (19.7%) in the North Central Mass Workforce Area. In addition, Construction (14.6%), and Office and Administrative Support (13.0%) were large contributors to the claimant population. Collectively these three occupational categories comprised almost half (47.3%) of the North Central Mass UI Claimants.
- From an industry perspective, the claimant population was heavily concentrated in three categories. More specifically, Manufacturing (19.0%), Construction (17.5%) and Administrative Support Services (10.4%) were responsible for 46.9% of the total North Central Mass claimant population.

Labor Force and Unemployment

- Between the fourth quarters of 2005 and 2006, the seasonally unadjusted unemployment rate in North Central Mass increased from 5.1% to 5.4%. A total of 6,882 North Central Mass residents were unemployed in fourth quarter 2006. During this same period, the seasonally unadjusted unemployment rate in Massachusetts increased from 4.5% to 4.7%, representing 161,233 unemployed residents statewide.
- The number of employed persons in North Central Mass increased by 779 (+0.7%) to a 2006 fourth quarter level of 119,935. Between the fourth quarters of 2005 and 2006, the number of employed persons in Massachusetts increased by 31,093 (+1.2%).
- Massachusetts and all but one Workforce Area experienced growth in the labor force over the last year. During the period under review, the Massachusetts labor force increased by 40,063 (+1.5%), while the North Central Mass labor force grew by 1,255 residents (+1.0%).

Summary of Trends in the North Central Workforce Area

Employment by Firm Size

- Small employers dominate the North Central Workforce Area. Among the 6,071 establishments reporting employment in March 2006, 87.0% had fewer than 20 employees. These firms, however, accounted for just 27.5% (22,450) of the total number of jobs (81,747) in the North Central Workforce Area.
- By contrast, 138 establishments (2.3%) reported having at least 100 employees. These firms were responsible, however, for 40.6% (33,203) of all jobs in the North Central Workforce Area. The share of employment among large employers is, however, well below the statewide share (48.7%).

Industry Employment and Wage Trends

- Between the second quarters of 2005 and 2006, the number of jobs in the North Central Mass Workforce Area increased by 191 or 0.2%. During the same period, the Massachusetts economy gained 27,263 jobs, an increase of 0.9%.
- Within the North Central Mass Workforce Area, Manufacturing plays a much more significant role relative to the entire Massachusetts economy. While Manufacturing represents just under 10% of total jobs in Massachusetts it accounts for nearly 1 in 5 (19.4%) of all jobs in North Central Mass and represents more than one quarter (25.9%) of total payroll. Furthermore, the 2005 Annual Average Wage in Manufacturing for North Central Mass was \$50,594, exceeding the overall Annual Wage of \$37,103 by \$13,491.
- While the rate of job loss in Manufacturing has slowed, declines were registered in both North Central Mass (-75) and Massachusetts (-6,552) between the second quarters of 2005 and 2006.
- Two large sectors, Health Care and Social Assistance (12.3%) and Retail Trade (12.7%) comprise one quarter of all jobs in the North Central Mass Workforce Area. Between the second quarters of 2005 and 2006, these two sectors both registered employment gains of 182 jobs and 240 jobs, respectively.
- Another major source of industry growth in North Central Mass was Professional and Business Services which increased by 157 jobs or 2.2%.
- The 2005 Annual Average Wage in North Central Mass of \$37,103 was below the statewide figure of \$50,097 by \$12,994. Among the key sectors whose annual average wages exceeded the overall average in North Central Mass were Construction (\$43,704) and Financial Activities (\$41,357). Professional and Business Services (\$37,129) was nearly identical to the overall regional average.
- Two of the region's largest sectors, Retail Trade (\$24,327) and Leisure and Hospitality (\$13,833), had wages that were considerably lower than the North Central Mass annual average wage of \$37,103. In addition, Health Care and Social Assistance (\$35,052) was also lower than the overall average for North Central Mass.

Summary of Trends in the North Central Workforce Area

Massachusetts Industry and Occupational Projections 2004-2014

- The Massachusetts economy is expected to generate 265,800 new jobs between 2004 and 2014, an increase of 7.8%. An additional 799,200 job openings will result from the need to replace workers who retire, change industries or change occupations. In total, nearly 1.1 million jobs will need to be filled by 2014.
- The two fastest growing sectors, Professional, Technical and Business Services (19.3%) and Health and Educational Services (16.2%) will also add the most jobs, expanding by 87,110 and 94,450 jobs, respectively and representing more than two-thirds of all new jobs. Health Care alone will account for nearly 64,000 jobs during the projection period. The third fastest growth rate was in Leisure and Hospitality (11.9%) which is projected to add 34,650 jobs.
- On a more detailed basis, seven industries are expected to increase by more than 10,000 jobs. These include Food Services and Drinking Places (22,480), Private Hospitals (22,320), Management and Technical Consulting (14,510), Residential Care Facilities (12,950), Employment Services (12,930), Offices of Health Practitioners (12,680), Colleges and Universities (11,900) and Computer Systems Design (10,920). Collectively, these seven industries account for nearly 121,000 jobs or 45.4% of the 265,800 projected new jobs.
- Among the 30 fastest growing occupations, 19 are in either health care or information technology. In terms of education and training, 22 of these fast growing occupations require at least an Associate's Degree. The top five fastest growing occupations include Network Systems Analysts (43%), Computer Software Systems Engineers (39%), Computer Applications Engineers (39%), Home Health Aides (38%) and Biomedical Engineers (34%).
- Twenty occupations will account for nearly half the new jobs created through 2014. Many are large occupations concentrated in industries such as Retail Trade and Hospitality. The five occupations generating the most new jobs are expected to include Registered Nurses (16,900), Retail Salespersons (10,400), Computer Software Applications Engineers (8,760), Postsecondary Teachers (8,550) and Janitors and Cleaners (7,650).
- It is important to remember that most job openings will be the result of replacement demand and not growth. In fact, over 70% of the 1.1 million projected openings will occur because of replacement associated with retirement, labor force withdrawal and occupational changers. Replacement needs tend to be greatest in occupations with high proportions of workers nearing retirement (teachers, machinists) or occupations with large concentrations of young and part time workers (waiters and waitresses, retail salespersons).
- Nevertheless, education and training will play an increasingly prominent role for both current and future job seekers. More than half (56%) of all new jobs related to growth will require an Associate's Degree or higher. While a Bachelor's degree may be preferable, it is important to recognize that some form of post-secondary education will be essential for those seeking rewarding career paths with good pay and upward mobility.

Summary of Trends in the North Central Workforce Area

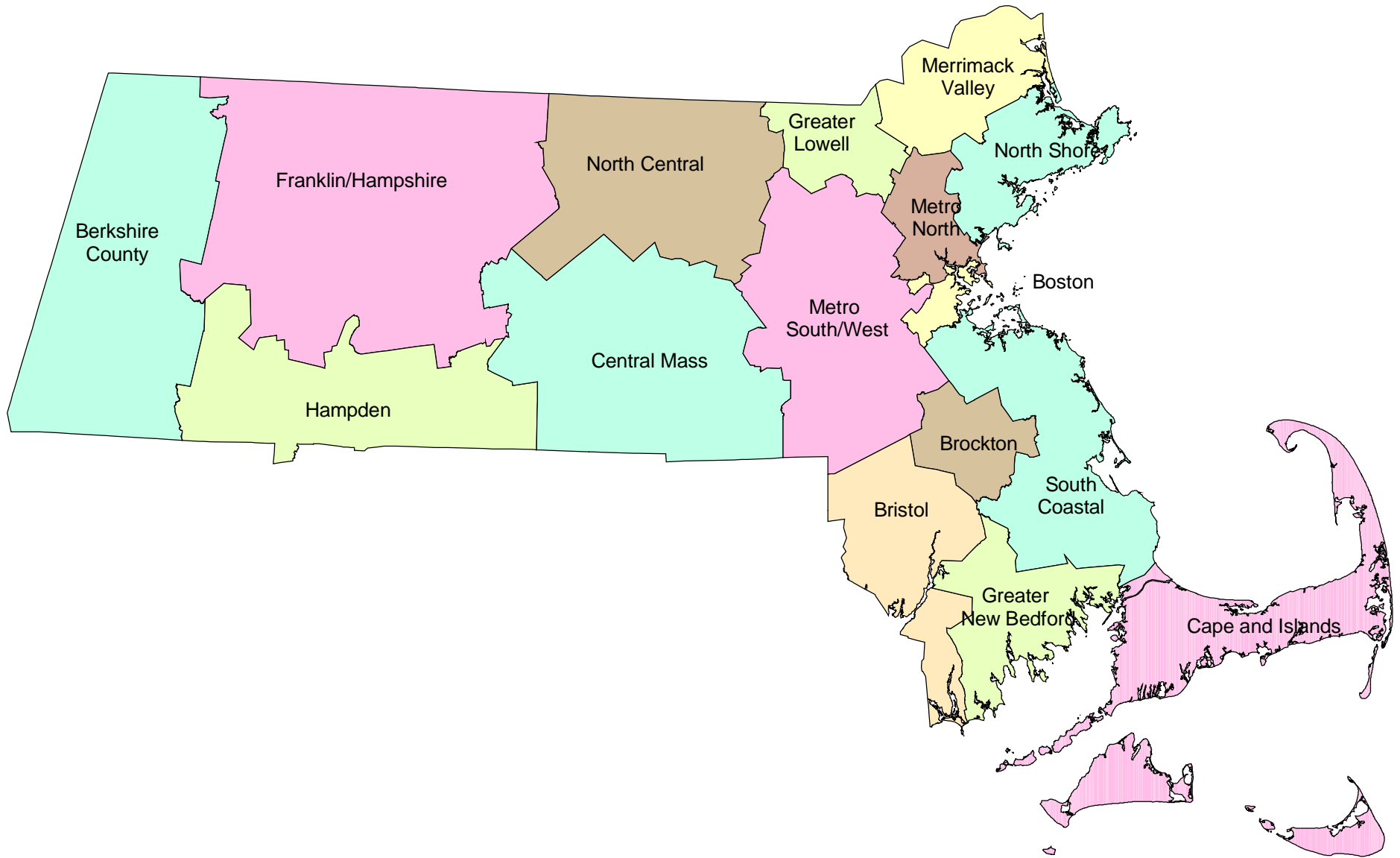
Population Estimates 2000-2005

- Between the April 2000 Census and July 2005, the total population in the North Central Workforce Area grew by 8,658, an increase of 3.6%. North Central Mass had the second fastest rate of population growth among the 16 Workforce Areas, trailing only Central Mass (4.6%).
- Among the 30 largest cities and towns in Massachusetts, there were sixteen that lost population. Leominster, the state's 30th largest city, however, experienced a slight population increase (501). As of July 2005, the Leominster population stood at 41,804.
- An important component of Worcester County's population growth was net migration which contributed 17,637 new residents between April 2000 and July 2006. This was largely the result of a net increase in international migration (17,257) and also migration from other states or communities in Massachusetts (380). It should be noted that Worcester County includes cities and towns in both the Central Mass and North Central Mass Workforce Areas.
- As a result of daytime population changes due to commuting, the North Central Workforce Area had a very large daily net outflow of 25,365 workers at the time of the 2000 Census. This resulted from the difference between 115,216 employed residents as compared to 89,851 workers employed by North Central business firms.

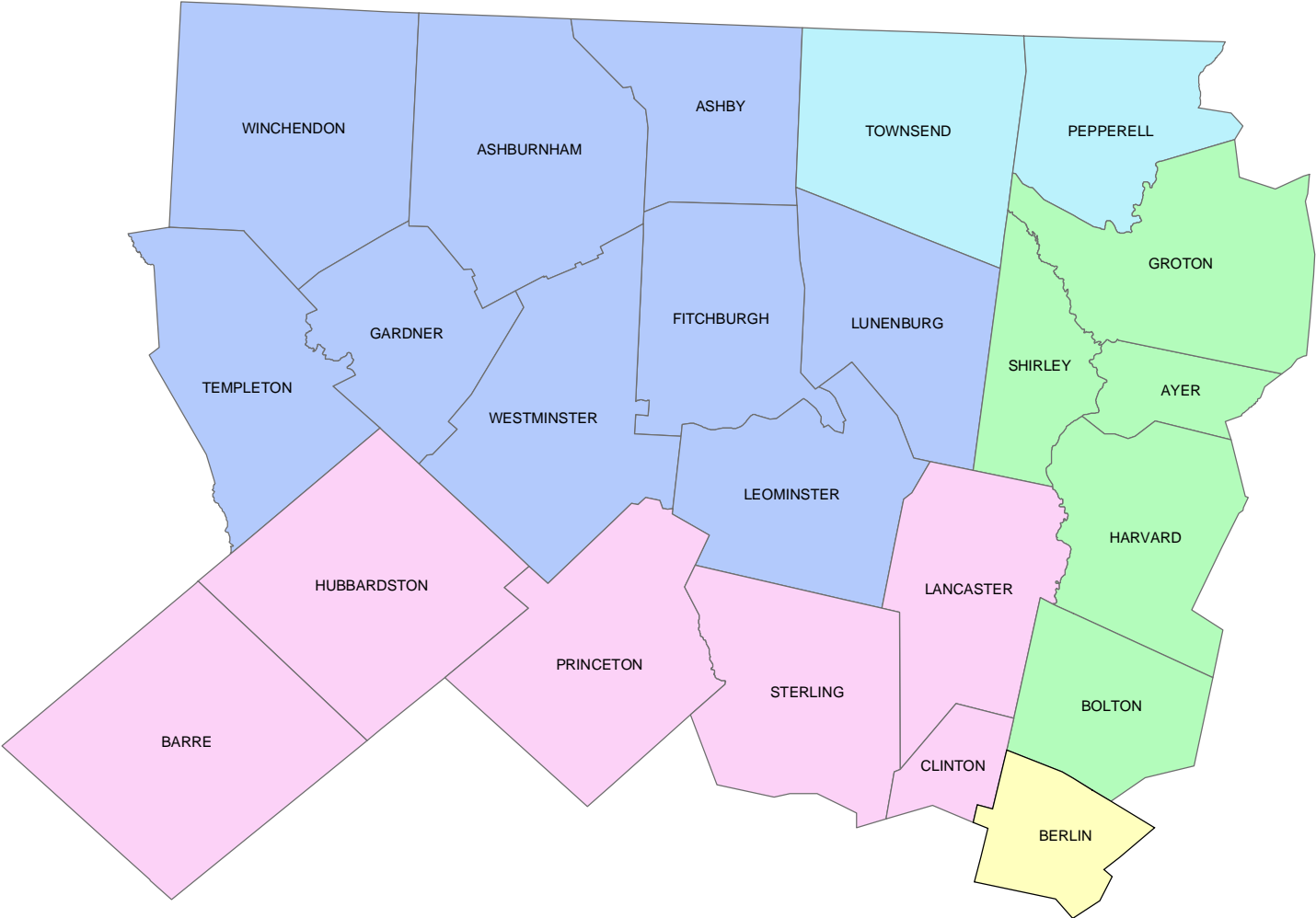
Massachusetts and U.S. Wages by Occupational Group

- According to the most recent wage survey conducted in May 2005, the mean Massachusetts wage for all occupations was \$45,970. The average Massachusetts wage exceeded the average U.S. wage of \$37,870 by \$8,100 or 21%.
- Massachusetts wages were larger than their U.S. counterparts in all 23 occupational groups for which wage information was collected. The top three occupational categories in Massachusetts were Management (\$99,600), Legal (\$91,850) and Computer and Mathematics (\$77,450).
- In addition to the three occupational groups noted above, there were four other occupational groups in Massachusetts that exceeded an average wage of \$60,000. These categories included Architecture and Engineering (\$70,620), Business and Financial (\$67,030), Life, Physical and Social Science (\$65,320) and Healthcare Practitioners (\$64,440).
- On the opposite end of the wage scale, the five occupational categories with the lowest average wages in Massachusetts were all below \$30,000. These groups included Healthcare Support (\$27,940), Building and Grounds (\$26,560), Personal Care and Service (\$26,470), Farming, Fishing and Forestry (\$25,010) and, the category with the lowest average wage, Food Preparation and Serving (\$21,750).

Massachusetts 16 Workforce Areas



The North Central Workforce Area comprises 23 cities and towns in the following 5 NECTAs



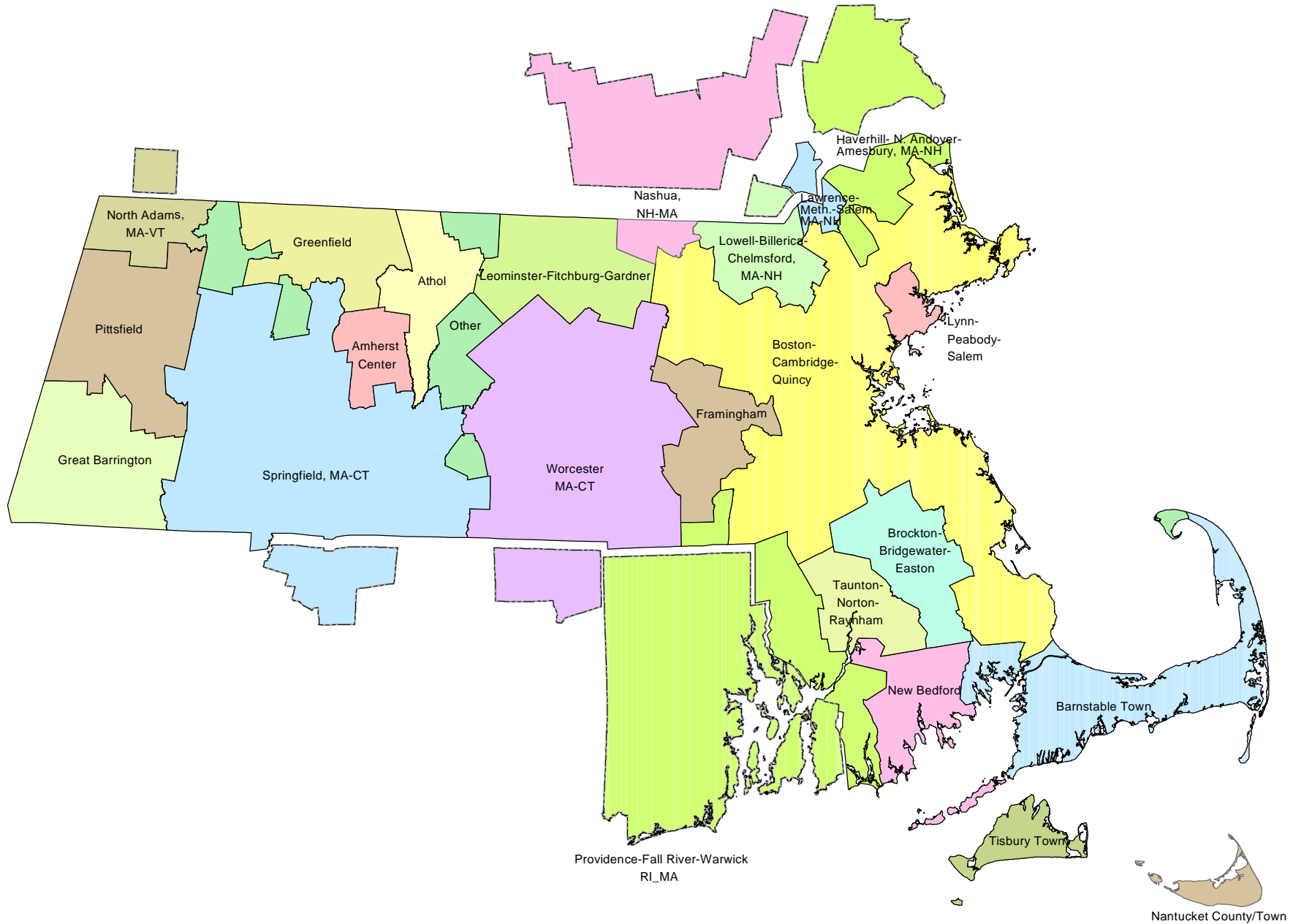
- Boston-Cambridge-Quincy, MA NECTA Div.
- Framingham, MA NECTA Div.
- Leominster-Fitchburg-Gardner, MA Metro NECTA
- Nashua, NH-MA NECTA Div.
- Worcester, MA-CT Metropolitan NECTA

Department of Workforce Development
Division of Career Services
Economic Analysis Department/July 2005

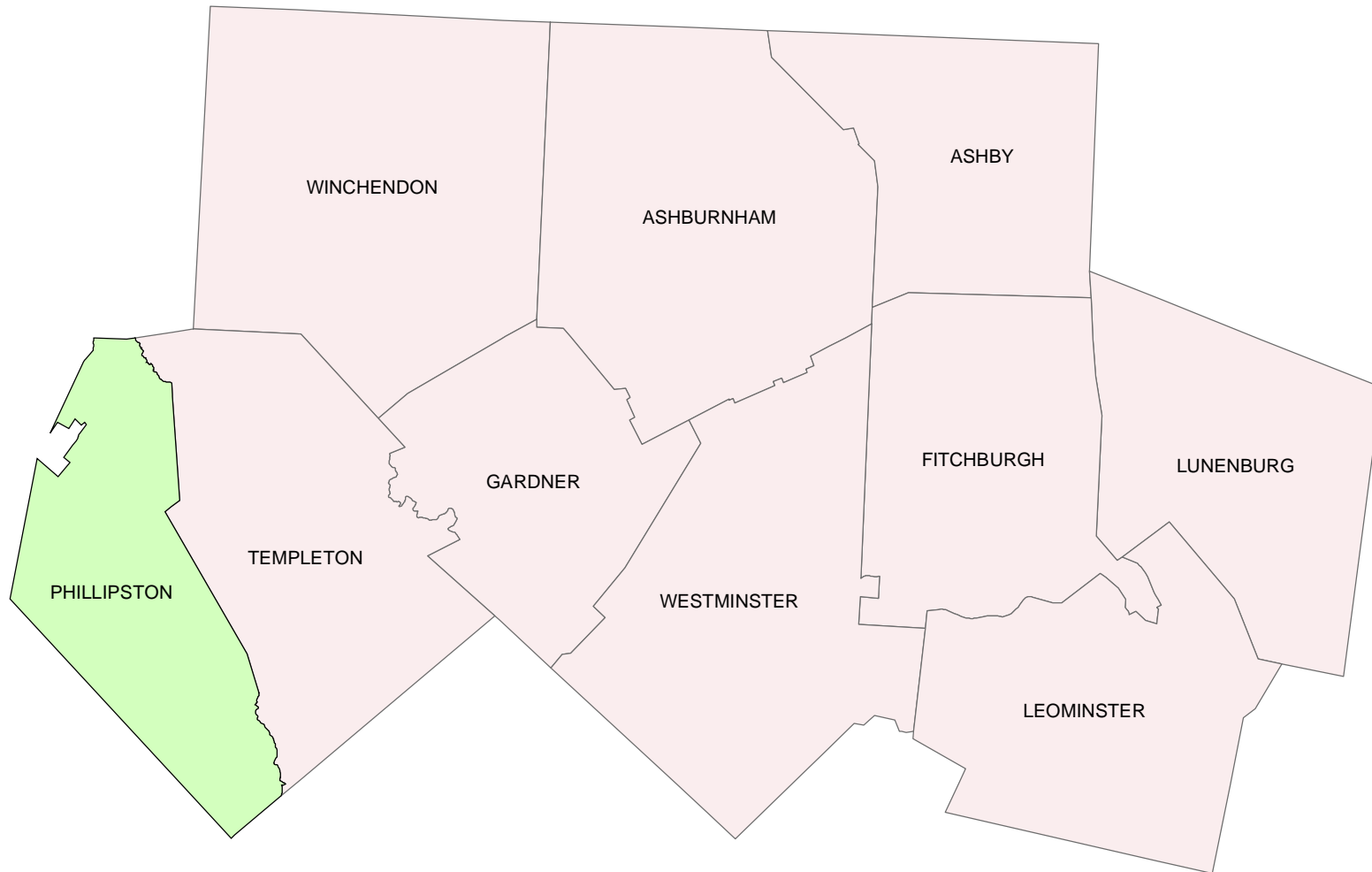
North Central Mass Workforce Area

Title	2000-Based LMA	Type	1990-Based LMA	Type	County
Ashburnham Town, MA	Leominster-Fitchburg-Gardner, MA Metropolitan NECTA	Metro	Fitchburg-Leominster, MA	PMSA	Worcester County
Ashby Town, MA	Leominster-Fitchburg-Gardner, MA Metropolitan NECTA	Metro	Fitchburg-Leominster, MA	PMSA	Middlesex County
Ayer Town, MA	Boston-Cambridge-Quincy, MA NECTA Division	Division	Boston, MA-NH	PMSA	Middlesex County
Barre Town, MA	Worcester, MA-CT Metropolitan NECTA	Metro	Worcester, MA-CT	PMSA	Worcester County
Berlin Town, MA	Framingham, MA NECTA Division	Division	Boston, MA-NH	PMSA	Worcester County
Bolton Town, MA	Boston-Cambridge-Quincy, MA NECTA Division	Division	Boston, MA-NH	PMSA	Worcester County
Clinton Town, MA	Worcester, MA-CT Metropolitan NECTA	Metro	Worcester, MA-CT	PMSA	Worcester County
Fitchburg City, MA	Leominster-Fitchburg-Gardner, MA Metropolitan NECTA	Metro	Fitchburg-Leominster, MA	PMSA	Worcester County
Gardner City, MA	Leominster-Fitchburg-Gardner, MA Metropolitan NECTA	Metro	Fitchburg-Leominster, MA	PMSA	Worcester County
Groton Town, MA	Boston-Cambridge-Quincy, MA NECTA Division	Division	Lowell, MA-NH	PMSA	Middlesex County
Harvard Town, MA	Boston-Cambridge-Quincy, MA NECTA Division	Division	Boston, MA-NH	PMSA	Worcester County
Hubbardston Town, MA	Worcester, MA-CT Metropolitan NECTA	Metro	Athol, MA LMA	SLMA	Worcester County
Lancaster Town, MA	Worcester, MA-CT Metropolitan NECTA	Metro	Boston, MA-NH	PMSA	Worcester County
Leominster City, MA	Leominster-Fitchburg-Gardner, MA Metropolitan NECTA	Metro	Fitchburg-Leominster, MA	PMSA	Worcester County
Lunenburg Town, MA	Leominster-Fitchburg-Gardner, MA Metropolitan NECTA	Metro	Fitchburg-Leominster, MA	PMSA	Worcester County
Pepperell Town, MA	Nashua, NH-MA NECTA Division	Division	Lowell, MA-NH	PMSA	Middlesex County
Princeton Town, MA	Worcester, MA-CT Metropolitan NECTA	Metro	Worcester, MA-CT	PMSA	Worcester County
Shirley Town, MA	Boston-Cambridge-Quincy, MA NECTA Division	Division	Boston, MA-NH	PMSA	Middlesex County
Sterling Town, MA	Worcester, MA-CT Metropolitan NECTA	Metro	Worcester, MA-CT	PMSA	Worcester County
Templeton Town, MA	Leominster-Fitchburg-Gardner, MA Metropolitan NECTA	Metro	Fitchburg-Leominster, MA	PMSA	Worcester County
Townsend Town, MA	Nashua, NH-MA NECTA Division	Division	Boston, MA-NH	PMSA	Middlesex County
Westminster Town, MA	Leominster-Fitchburg-Gardner, MA Metropolitan NECTA	Metro	Fitchburg-Leominster, MA	PMSA	Worcester County
Winchendon Town, MA	Leominster-Fitchburg-Gardner, MA Metropolitan NECTA	Metro	Fitchburg-Leominster, MA	PMSA	Worcester County

The New England City and Town Areas (NECTAs) for Massachusetts

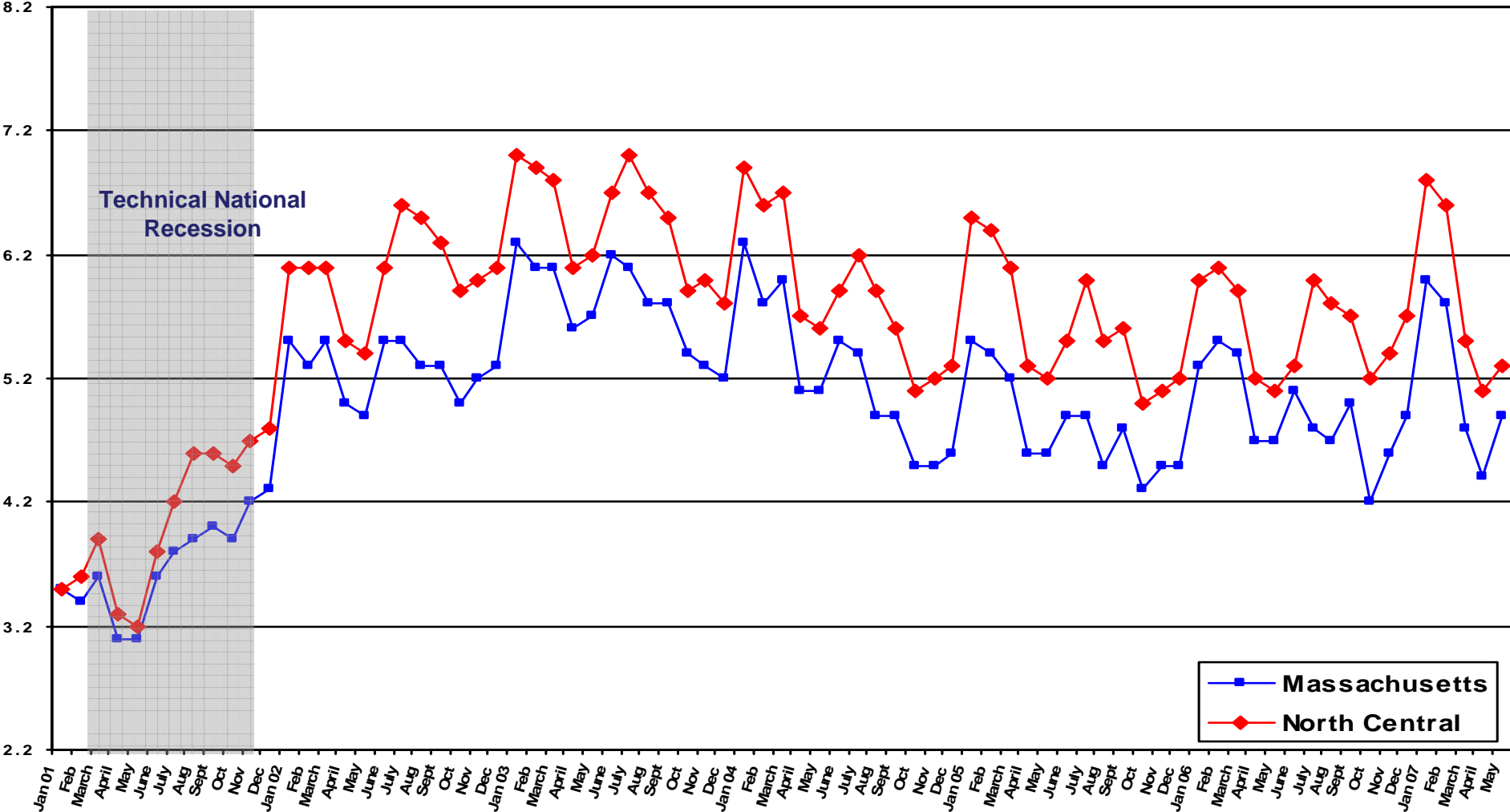


The Leominster-Fitchburg-Gardner, MA Metropolitan NECTA consists of 10 Massachusetts cities and towns in the following 2 workforce areas



- Franklin/Hampshire
- North Central Mass

Massachusetts vs. North Central Workforce Area Unemployment Rates January 2001-May 2007 (not seasonally adjusted)



Source: Local Area Unemployment Statistics (LAUS)

Prepared by Massachusetts Department of Workforce Development, Division of Career Services, Economic Analysis Office

Labor Force Estimates by Workforce Area

May 2007

<i>Area</i>	<i>Labor Force</i>	<i>Employed</i>	<i>Unemployed</i>	<i>May 2007 Unemp</i>	<i>May 2006 Unemp</i>
Massachusetts	3,404,000	3,238,100	165,900	4.9%	4.7%
Berkshire County	72,157	68,727	3,430	4.8%	4.1%
Boston	289,822	274,995	14,827	5.1%	5.2%
Bristol	196,393	185,733	10,660	5.4%	5.4%
Brockton	123,405	116,806	6,599	5.3%	5.1%
Cape and Islands	138,609	132,069	6,540	4.7%	4.5%
Central Mass	289,484	274,382	15,102	5.2%	4.9%
Franklin/Hampshire	136,895	130,959	5,936	4.3%	4.0%
Greater Lowell	144,547	137,352	7,195	5.0%	4.8%
Greater New Bedford	106,706	100,234	6,472	6.1%	5.8%
Hampden	224,400	211,096	13,304	5.9%	5.8%
Merrimack Valley	160,753	151,956	8,797	5.5%	5.4%
Metro North	407,383	390,002	17,381	4.3%	4.2%
Metro South/West	488,461	469,751	18,710	3.8%	3.8%
North Central Mass	126,143	119,399	6,744	5.3%	5.1%
North Shore	216,163	205,641	10,522	4.9%	4.9%
South Coastal	282,710	269,000	13,710	4.8%	4.6%

Labor Force Estimates by City And Town

May 2007

<i>Area</i>	<i>Labor Force</i>	<i>Employed</i>	<i>Unemployed</i>	<i>May 2007 Unemp Rate</i>	<i>May 2006 Unemp Rate</i>
Massachusetts	3,404,000	3,238,100	165,900	4.9%	4.7%
North Central Mass Workforce Area	126,143	119,399	6,744	5.3%	5.1%
Ashburnham	3,148	2,972	176	5.6%	5.2%
Ashby	1,588	1,501	87	5.5%	5.1%
Ayer	4,182	3,981	201	4.8%	4.3%
Barre	2,770	2,611	159	5.7%	5.0%
Berlin	1,508	1,434	74	4.9%	4.7%
Bolton	2,590	2,485	105	4.1%	4.2%
Clinton	7,546	7,137	409	5.4%	5.1%
Fitchburg	18,402	17,225	1,177	6.4%	6.4%
Gardner	9,908	9,287	621	6.3%	5.8%
Groton	5,591	5,388	203	3.6%	3.6%
Harvard	2,984	2,863	121	4.1%	3.3%
Hubbardston	2,463	2,335	128	5.2%	4.0%
Lancaster	3,091	2,911	180	5.8%	5.3%
Leominster	20,826	19,629	1,197	5.7%	5.3%
Lunenburg	5,365	5,084	281	5.2%	5.0%
Pepperell	6,438	6,214	224	3.5%	3.8%
Princeton	1,981	1,901	80	4.0%	4.1%
Shirley	3,637	3,447	190	5.2%	4.8%
Sterling	4,464	4,269	195	4.4%	3.9%
Templeton	3,714	3,472	242	6.5%	6.1%
Townsend	5,218	5,041	177	3.4%	3.7%
Westminster	3,868	3,651	217	5.6%	5.1%
Winchendon	4,861	4,561	300	6.2%	5.3%

Recent Job Growth in Massachusetts NECTAs
May 2006 to May 2007
 (Not Seasonally Adjusted)

Local Area Job Growth	May 2007	May 2006	Net Change	Percent Change
Massachusetts	3,290,000	3,255,900	34,100	1.0%
Major NECTAs				
Boston-Cambridge-Quincy, MA-NH Metro NECTA	2,483,100	2,452,500	30,600	1.2%
Boston-Cambridge-Quincy Division	1,700,200	1,670,600	29,600	1.8%
Brockton-Bridgewater-Easton Division	93,000	91,900	1,100	1.2%
Framingham Division	156,300	155,200	1,100	0.7%
Haverhill-North Andover-Amesbury, MA-NH Division	79,500	78,700	800	1.0%
Lowell-Billerica-Chelmsford, MA NH Division	120,600	119,300	1,300	1.1%
Peabody Division	103,400	102,700	700	0.7%
Barnstable Metro NECTA	100,800	100,800	0	0.0%
Leominster-Fitchburg-Gardner Metro NECTA	51,900	51,800	100	0.2%
New Bedford Metro NECTA	69,000	67,900	1,100	1.6%
Pittsfield Metro NECTA	37,100	36,900	200	0.5%
Springfield, MA-CT Metro NECTA	301,400	300,800	600	0.2%
Worcester, MA-CT Metro NECTA	251,700	248,500	3,200	1.3%

Source: Current Employment Statistics (CES-790)

Prepared by Massachusetts Department of Workforce Development, Division of Career Services, Economic Analysis Office

Recent Job Growth in the Leominster-Fitchburg-Gardener NECTA
May 2006 to May 2007
 (Not Seasonally Adjusted)

Industry	May 2007	May 2006	Net Change	Percent Change
Total Nonfarm	51,900	51,800	100	0.2%
Natural Resources Mining & Construction	2,500	2,400	100	4.2%
Manufacturing	8,800	8,900	-100	-1.1%
Trade, Transportation and Utilities	10,900	10,800	100	0.9%
Retail Trade	8,500	8,300	200	2.4%
Information	500	600	-100	-16.7%
Financial Activities	1,800	1,900	-100	-5.3%
Professional, Scientific and Business Services	3,800	3,700	100	2.7%
Educational and Health Services	7,900	7,900	0	0.0%
Leisure and Hospitality	5,100	5,000	100	2.0%
Other Services, Exp. Public Admin.	1,700	1,700	0	0.0%
Government	8,900	8,900	0	0.0%
State Government	2,300	2,300	0	0.0%
Local Government	6,000	6,000	0	0.0%

Source: Current Employment Statistics (CES-790)

Prepared by Massachusetts Department of Workforce Development, Division of Career Services, Economic Analysis Office

Private Industry Employment Distribution North Central WA vs. Massachusetts 2005 Annual Average

NAICS	Description	Average Monthly Emp. North Central	% of Total Employment North Central	% of Total Employment Mass.	Ratio of % Share North Central vs. Mass.
00	Total Nonfarm Employment	67,078	100.0%	100.0%	1.0
23	Construction	4,102	6.1%	5.1%	1.2
31-33	Manufacturing	15,417	23.0%	11.1%	2.1
	Trade, Transportation and Utilities	14,806	22.1%	20.6%	1.1
22	Utilities	219	0.3%	0.3%	0.9
42	Wholesale Trade	2,378	3.5%	4.8%	0.7
44-45	Retail Trade	10,335	15.4%	12.9%	1.2
48-49	Transportation and Warehousing	1,874	2.8%	2.5%	1.1
51	Information	884	1.3%	3.2%	0.4
52-53	Financial Activities	2,584	3.9%	8.0%	0.5
52	Finance and Insurance	1,762	2.6%	6.4%	0.4
53	Real Estate and Rental and Leasing	822	1.2%	1.6%	0.8
54-56	Professional and Business Services	6,960	10.4%	16.7%	0.6
54	Professional, Scientific & Technical Services	2,470	3.7%	8.4%	0.4
55	Management of Companies and Enterprises	1,063	1.6%	2.4%	0.7
56	Administrative and Waste Services	3,427	5.1%	5.9%	0.9
61-62	Education and Health Services	11,775	17.6%	20.1%	0.9
61	Educational Services	1,815	2.7%	4.2%	0.6
62	Health Care and Social Assistance	9,960	14.8%	15.9%	0.9
71-72	Leisure and Hospitality	7,600	11.3%	10.6%	1.1
71	Arts, Entertainment, and Recreation	1,525	2.3%	1.7%	1.4
72	Accommodation and Food Services	6,074	9.1%	8.9%	1.0
81	Other Services, Ex. Public Admin.	2,515	3.7%	4.3%	0.9

Source: Quarterly Census of Employment and Wages (ES-202)

Prepared by Massachusetts Department of Workforce Development, Division of Career Services, Economic Analysis Office

Private Employment Distribution, Detailed Manufacturing Industries North Central WA vs. Massachusetts 2005 Annual Average

NAICS	Description	Average Monthly Emp. North Central	% of Total Employment North Central	% of Total Employment Mass.	Ratio of % Share North Central vs. Mass.
00	Total, Nonfarm Employment	67,078	100.00%	100.00%	1.0
31-33	Manufacturing	15,417	22.98%	11.07%	2.1
311	Food Manufacturing	643	0.96%	0.83%	1.2
312	Beverage & Tobacco Product Manufacturing	298	0.44%	0.09%	4.8
313	Textile Mills	211	0.31%	0.28%	1.1
321	Wood Product Manufacturing	133	0.20%	0.12%	1.6
322	Paper Manufacturing	1,822	2.72%	0.48%	5.7
323	Printing and Related Support Activities	1,059	1.58%	0.57%	2.8
325	Chemical Manufacturing	966	1.44%	0.62%	2.3
326	Plastics & Rubber Products Manufacturing	3,521	5.25%	0.58%	9.1
327	Nonmetallic Mineral Product Mfg	302	0.45%	0.24%	1.9
331	Primary Metal Manufacturing	354	0.53%	0.20%	2.7
332	Fabricated Metal Product Manufacturing	1,331	1.98%	1.29%	1.5
333	Machinery Manufacturing	1,468	2.19%	0.77%	2.8
334	Computer and Electronic Product Mfg	1,662	2.48%	2.62%	0.9
335	Electrical Equipment and Appliances	333	0.50%	0.40%	1.2
337	Furniture and Related Product Mfg	743	1.11%	0.21%	5.3
339	Miscellaneous Manufacturing	176	0.26%	0.87%	0.3

Source: Quarterly Census of Employment and Wages (ES-202)

Prepared by Massachusetts Department of Workforce Development, Division of Career Services, Economic Analysis Office

**Distribution of Establishments and Employment by Size Group
North Central Mass Workforce Area and Massachusetts
March 2006**

Size Group	# Establishments North Central Mass	Share of All Establishments	# Establishments State	Share of All Establishments
0 to 19	5,282	87.0%	178,543	86.9%
20 to 99	651	10.7%	21,953	10.7%
100 to 499	126	2.1%	4,375	2.1%
500+	12	0.2%	579	0.3%
Total	6,071	100.0%	205,450	100.0%

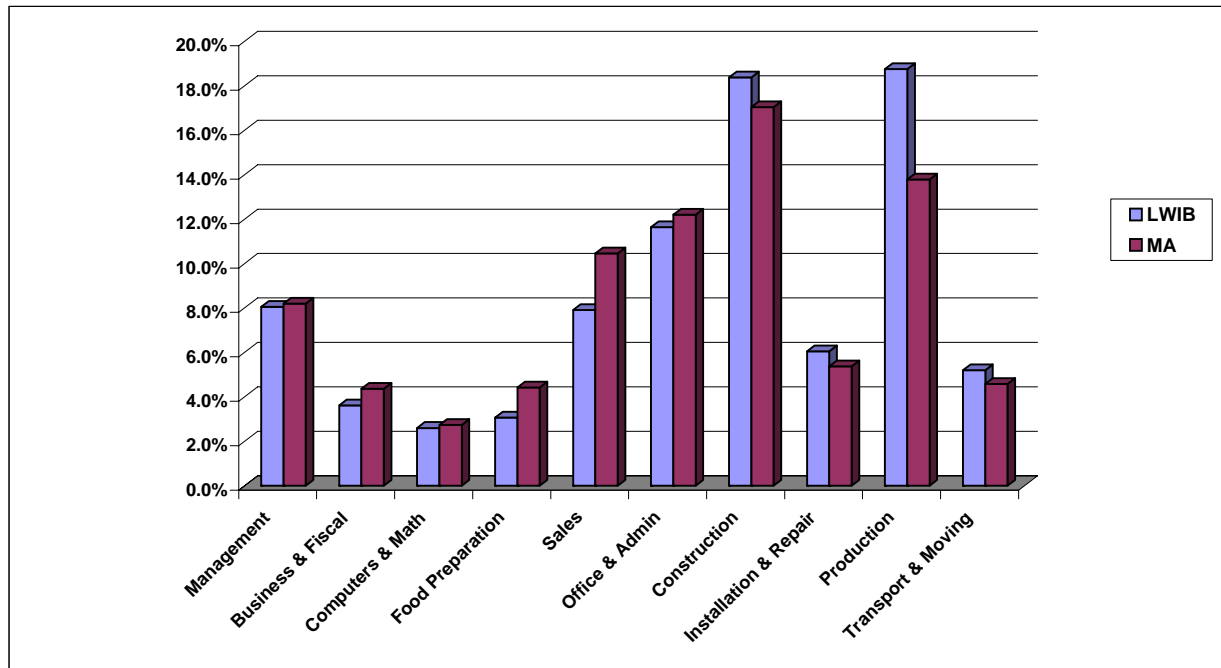
Size Group	# Employees North Central Mass	Share of All Employees	# Employees State	Share of All Employees
0 to 19	22,450	27.5%	726,218	23.2%
20 to 99	26,094	31.9%	881,698	28.1%
100 to 499	23,516	28.8%	824,845	26.3%
500+	9,687	11.8%	702,990	22.4%
Total	81,747	100.0%	3,135,751	100.0%

Source: Quarterly Census of Employment and Wages (ES-202 Program)

Prepared by: Massachusetts Department of Workforce Development
Division of Career Services
Economic Analysis Office

Profile of Unemployment Insurance Claimants North Central Mass

Claimants by Standard Occupational Classification (SOC)	North Central Mass May 2007		Massachusetts May 2007	
	Number	Percent	Number	Percent
Total	2,955	100.0%	68,703	100.0%
Management (SOC 11)	238	8.1%	5,632	8.2%
Business & Fiscal Operations (SOC 13)	107	3.6%	3,001	4.4%
Computer & Mathematics (SOC 15)	77	2.6%	1,882	2.7%
Architecture & Engineering (SOC 17)	62	2.1%	926	1.3%
Life, Physical & Social Sciences (SOC 19)	10	0.3%	458	0.7%
Community & Social Services (SOC 21)	18	0.6%	491	0.7%
Legal Occupations (SOC 23)	14	0.5%	410	0.6%
Education, Training & Library (SOC 25)	46	1.6%	895	1.3%
Arts, Design, Entertainment, Sports & Media (SOC 27)	13	0.4%	611	0.9%
Health Practitioners & Technical (SOC 29)	18	0.6%	548	0.8%
Healthcare Support (SOC 31)	96	3.2%	2,270	3.3%
Protective Services (SOC 33)	19	0.6%	523	0.8%
Food Preparation & Serving (SOC 35)	91	3.1%	3,042	4.4%
Building & Grounds Cleaning & Maintenance (SOC 37)	67	2.3%	1,426	2.1%
Personal Care & Service (SOC 39)	53	1.8%	1,905	2.8%
Sales & Related (SOC 41)	234	7.9%	7,182	10.5%
Office & Administrative Support (SOC 43)	344	11.6%	8,385	12.2%
Farming, Fishing, Forestry (SOC 45)	14	0.5%	950	1.4%
Construction and Extraction (SOC 47)	543	18.4%	11,707	17.0%
Installation, Maintenance, Repair (SOC 49)	179	6.1%	3,692	5.4%
Production Occupations (SOC 51)	554	18.7%	9,475	13.8%
Transportation & Material Moving (SOC 53)	154	5.2%	3,153	4.6%
INA or SOC Code Unknown	1	0.0%	23	0.0%

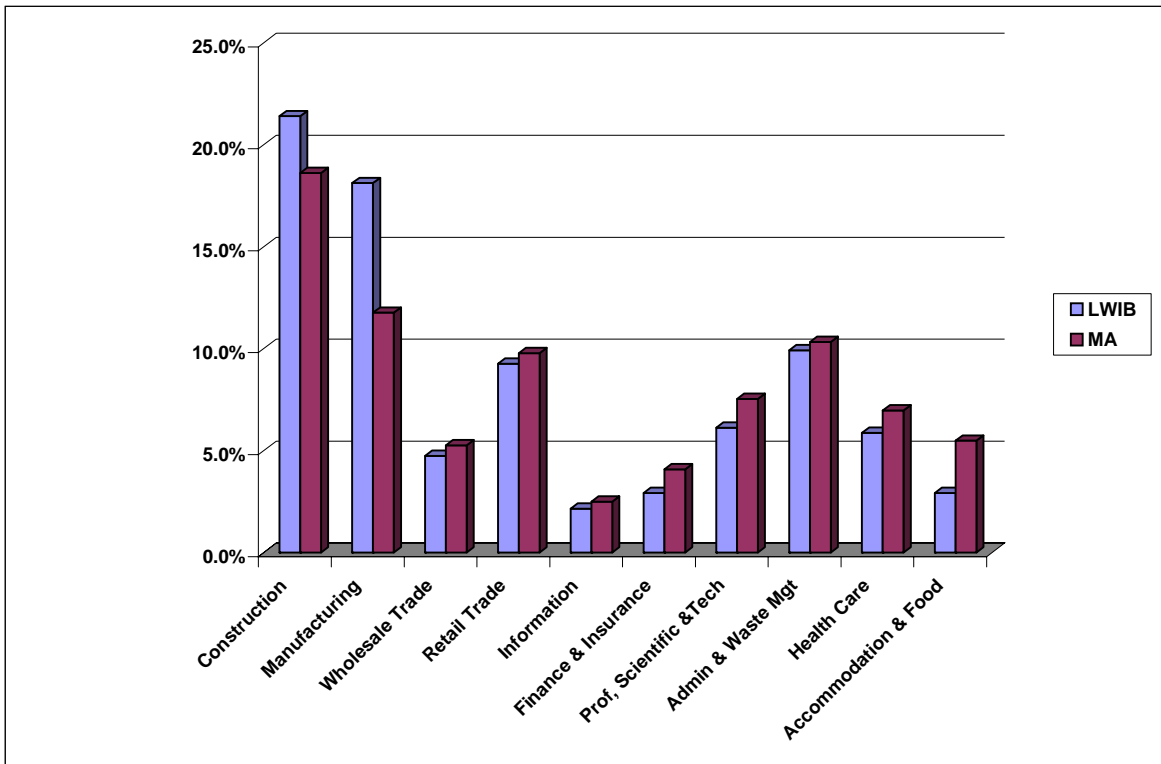


Source: Profile of Massachusetts Unemployment Claimants

Massachusetts Department of Workforce Development
Division of Career Services
Economic Analysis Office

Profile of Unemployment Insurance Claimants North Central Mass (Continued)

Claimants by NAICS Industry Classification	North Central Mass May 2007		Massachusetts May 2007	
	Number	Percent	Number	Percent
Total (does not include partially-unemployed claimants)	2,743	100.0%	63,253	100.0%
Agriculture, Forestry, Fishing, Hunting (NAICS 11)	9	0.3%	488	0.8%
Mining (NAICS 21)	4	0.1%	153	0.2%
Utilities (NAICS 22)	1	0.0%	55	0.1%
Construction (NAICS 23)	587	21.4%	11,773	18.6%
Manufacturing (NAICS 31-33)	497	18.1%	7,440	11.8%
Wholesale Trade (NAICS 42)	130	4.7%	3,324	5.3%
Retail Trade (NAICS 44-45)	254	9.3%	6,181	9.8%
Transportation and Warehousing (NAICS 48-49)	88	3.2%	1,618	2.6%
Information (NAICS 51)	59	2.2%	1,578	2.5%
Finance and Insurance (NAICS 52)	80	2.9%	2,584	4.1%
Real Estate and Rental Leasing (NAICS 53)	44	1.6%	1,071	1.7%
Professional, Scientific and Technical Services (NAICS 54)	168	6.1%	4,762	7.5%
Management of Companies and Enterprises (NAICS 55)	9	0.3%	168	0.3%
Admin. & Support & Waste Mgt. & Redemption Serv. (NAICS 56)	272	9.9%	6,530	10.3%
Educational Services (NAICS 61)	37	1.3%	757	1.2%
Health Care and Social Assistance (NAICS 62)	161	5.9%	4,408	7.0%
Arts, Entertainment and Recreation (NAICS 71)	43	1.6%	710	1.1%
Accommodation and Food Services (NAICS 72)	80	2.9%	3,470	5.5%
Other Services (Except Public Administration) (NAICS 81)	71	2.6%	2,415	3.8%
Public Administration (NAICS 92)	32	1.2%	750	1.2%
INA (No NAICS Code)	117	4.3%	3,018	4.8%



Source: Profile of Massachusetts Unemployment Claimants

Massachusetts Department of Workforce Development
Division of Career Services
Economic Analysis Office

**Annual Estimates of the Population for Massachusetts by Workforce Area
April 1, 2000 to July 1, 2006**

Geographic Area	Population Estimates							April 1, 2000		Estimates Base Population April 1, 2000 to July 1, 2006	
	July 1, 2006	July 1, 2005	July 1, 2004	July 1, 2003	July 1, 2002	July 1, 2001	July 1, 2000	Estimates Base	Census	Net Change	Percent Change
United States	299,398,484	296,507,061	293,638,158	290,796,023	288,125,973	285,226,284	282,216,952	281,424,602	281,421,906	17,973,882	6.4%
Massachusetts	6,437,193	6,433,367	6,435,995	6,439,592	6,431,247	6,406,727	6,362,604	6,349,105	6,349,097	88,088	1.4%
Berkshire County	131,117	131,783	132,323	132,929	133,256	133,901	134,821	134,953	134,953	-3,836	-2.8%
Boston	590,763	596,638	589,048	587,342	587,224	588,322	589,063	589,144	589,141	1,619	0.3%
Bristol	362,697	362,752	362,951	362,379	360,365	356,879	354,227	353,153	353,153	9,544	2.7%
Brockton	235,679	235,563	235,568	235,632	234,584	232,938	231,597	230,970	230,970	4,709	2.0%
Cape and Islands	250,571	251,853	253,404	254,341	252,821	250,238	247,896	246,737	246,737	3,834	1.6%
Central Mass	560,067	557,700	554,856	552,551	548,595	543,253	536,477	534,441	534,433	25,626	4.8%
Franklin/Hampshire	241,761	241,734	241,611	241,333	240,144	238,551	239,322	239,142	239,140	2,619	1.1%
Greater Lowell	273,401	271,447	271,472	271,087	271,298	271,555	270,340	269,838	270,083	3,563	1.3%
Greater New Bedford	208,778	209,096	209,383	209,269	208,367	206,681	205,937	205,354	205,354	3,424	1.7%
Hampden County	460,520	460,828	460,874	460,829	459,305	456,895	456,630	456,226	456,228	4,294	0.9%
Merrimack Valley	324,564	323,255	323,342	323,650	323,082	321,977	319,424	318,556	318,556	6,008	1.9%
Metro North	731,881	730,083	742,351	751,476	757,013	757,122	744,121	743,216	743,219	-11,335	-1.5%
Metro South/West	889,383	889,041	890,044	890,666	890,620	890,637	884,994	882,953	882,953	6,430	0.7%
North Central Mass	248,510	247,419	246,487	245,743	244,389	242,524	239,876	239,032	238,787	9,478	4.0%
North Shore	411,394	411,006	410,470	411,135	411,628	409,696	406,051	404,863	404,863	6,531	1.6%
South Coastal	516,107	513,169	511,811	509,230	508,556	505,558	501,828	500,527	500,527	15,580	3.1%

Note: The April 1, 2000 Population Estimates Base reflects modifications to the Census 2000 population as documented in the Count Question Resolution program, updates from the Boundary and Annexation Survey, and geographic program revisions. Dash (-) represents zero or rounds to zero.

**Annual Estimates of the Population for the 40 Largest Cities and Towns in Massachusetts:
April 1, 2000 to July 1, 2006**

Rank In 2006	Geographic Area	Population Estimates							April 1, 2000		Estimates Base Population April 1, 2000 to July 1, 2006	
		July 1, 2006	July 1, 2005	July 1, 2004	July 1, 2003	July 1, 2002	July 1, 2001	July 1, 2000	Estimates Base	Census	Net Change	Percent Change
	Massachusetts	6,437,193	6,433,367	6,435,995	6,439,592	6,431,247	6,406,727	6,362,604	6,349,105	6,349,097	88,088	1.4%
1	Boston city	590,763	596,638	589,048	587,342	587,224	588,322	589,063	589,144	589,141	1,619	0.3%
2	Worcester city	175,454	175,559	175,628	175,372	175,091	174,116	173,042	172,648	172,648	2,806	1.6%
3	Springfield city	151,176	151,483	151,771	152,028	151,964	151,510	152,097	152,080	152,082	-904	-0.6%
4	Lowell city	103,229	103,383	103,777	104,213	104,710	105,258	105,261	105,167	105,167	-1,938	-1.8%
5	Cambridge city	101,365	100,318	100,974	101,633	102,180	102,405	101,544	101,303	101,355	62	0.1%
6	Brockton city	94,191	94,538	94,767	95,027	95,232	94,725	94,461	94,304	94,304	-113	-0.1%
7	New Bedford city	92,538	93,021	93,727	94,047	94,130	93,902	93,882	93,768	93,768	-1,230	-1.3%
8	Fall River city	91,474	91,723	92,302	92,716	92,738	92,294	92,092	91,938	91,938	-464	-0.5%
9	Quincy city	91,058	90,102	89,781	88,887	88,970	88,918	88,242	88,025	88,025	3,033	3.4%
10	Lynn city	87,991	88,302	88,854	89,329	89,591	89,565	89,200	89,050	89,050	-1,059	-1.2%
11	Newton city	82,819	83,371	83,897	84,192	83,643	83,922	83,909	83,829	83,829	-1,010	-1.2%
12	Somerville city	74,554	75,212	75,888	76,448	77,009	77,503	77,669	77,657	77,478	-3,103	-4.0%
13	Lawrence city	70,662	70,919	71,350	71,810	72,070	72,184	72,139	72,043	72,043	-1,381	-1.9%
14	Framingham town	64,762	65,235	65,677	66,088	66,440	66,896	66,957	66,910	66,910	-2,148	-3.2%
15	Haverhill city	60,176	59,912	60,059	60,205	59,718	59,596	59,130	58,969	58,969	1,207	2.0%
16	Waltham city	59,352	59,703	59,297	58,781	58,951	59,255	59,268	59,226	59,226	126	0.2%
17	Taunton city	56,074	56,203	56,490	56,681	56,645	56,349	56,101	55,976	55,976	98	0.2%
18	Medford city	55,681	55,798	55,560	55,512	55,462	55,689	55,649	55,638	55,765	43	0.1%
19	Malden city	55,595	56,022	55,407	55,726	56,044	56,371	56,374	56,340	56,340	-745	-1.3%
20	Plymouth town	55,516	54,871	54,468	54,070	53,568	52,869	51,963	51,701	51,701	3,815	7.4%
21	Brookline town	55,241	55,498	56,105	56,536	56,897	57,081	57,127	57,107	57,107	-1,866	-3.3%
22	Chicopee city	54,428	54,589	54,722	54,879	54,806	54,635	54,675	54,653	54,653	-225	-0.4%
23	Weymouth town	53,606	53,699	54,125	54,359	54,575	54,070	54,026	53,988	53,988	-382	-0.7%
24	Peabody city	51,734	50,956	50,014	49,463	49,542	49,002	48,330	48,129	48,129	3,605	7.5%
25	Barnstable Town city	47,380	47,760	48,336	48,694	48,597	48,265	47,992	47,821	47,821	-441	-0.9%
26	Revere city	46,833	45,773	50,325	53,121	54,483	53,109	47,426	47,280	47,283	-447	-0.9%
27	Methuen city	44,259	44,361	44,527	44,610	44,542	44,345	43,923	43,789	43,789	470	1.1%
28	Pittsfield city	43,497	43,832	44,224	44,608	44,925	45,286	45,709	45,787	45,793	-2,290	-5.0%
29	Attleboro city	43,283	43,345	43,385	43,385	43,134	42,618	42,217	42,068	42,068	1,215	2.9%
30	Leominster city	41,549	41,719	41,826	41,874	41,876	41,709	41,402	41,303	41,303	246	0.6%
31	Billerica town	41,391	40,069	39,998	39,425	39,415	39,261	39,057	38,981	38,981	2,410	6.2%
32	Salem city	41,343	41,529	41,620	41,961	42,141	41,119	40,570	40,407	40,407	936	2.3%
33	Arlington town	41,075	41,337	41,596	41,804	42,029	42,342	42,401	42,389	42,389	-1,314	-3.1%
34	Westfield city	40,460	40,460	40,476	40,505	40,311	40,077	40,117	40,072	40,072	388	1.0%
35	Fitchburg city	40,050	39,966	39,832	39,865	39,733	39,396	39,196	39,102	39,102	948	2.4%
36	Holyoke city	39,765	39,892	39,974	40,021	39,976	39,882	39,866	39,838	39,838	-73	-0.2%
37	Beverly city	39,538	39,665	39,894	40,110	40,195	40,162	39,941	39,862	39,862	-324	-0.8%
38	Marlborough city	38,062	37,546	37,746	37,881	38,038	37,939	36,609	36,256	36,255	1,806	5.0%
39	Woburn city	37,010	37,248	37,493	37,731	37,891	37,569	37,339	37,257	37,258	-247	-0.7%
40	Everett city	37,008	36,937	37,240	37,510	37,713	37,997	38,048	38,037	38,037	-1,029	-2.7%

Note: The April 1, 2000 Population Estimates Base reflects modifications to the Census 2000 population as documented in the Count Question Resolution program, updates from the Boundary and Annexation Survey, and geographic program revisions. Dash (-) rep

Annual Estimates of the Population for Cities and Towns in the North Central Mass Workforce Area April 1, 2000 to July 1, 2006

Geographic Area	Population Estimates							April 1, 2000		Estimates Base Population April 1, 2000 to July 1, 2006	
	July 1, 2006	July 1, 2005	July 1, 2004	July 1, 2003	July 1, 2002	July 1, 2001	July 1, 2000	Estimates Base	Census	Net Change	Percent Change
United States	299,398,484	296,507,061	293,638,158	290,796,023	288,125,973	285,226,284	282,216,952	281,424,602	281,421,906	17,973,882	6.4%
Massachusetts	6,437,193	6,433,367	6,435,995	6,439,592	6,431,247	6,406,727	6,362,604	6,349,105	6,349,097	88,088	1.4%
North Central Mass WIA	248,510	247,419	246,487	245,743	244,389	242,524	239,876	239,032	238,787	9,478	4.0%
Ashburnham Town	5,996	5,969	5,889	5,841	5,746	5,673	5,574	5,546	5,546	450	8.1%
Ashby Town	2,943	2,938	2,930	2,917	2,899	2,887	2,855	2,845	2,845	98	3.4%
Ayer Town	7,315	7,247	7,220	7,248	7,290	7,328	7,299	7,287	7,287	28	0.4%
Barre Town	5,427	5,369	5,346	5,332	5,290	5,232	5,139	5,113	5,113	314	6.1%
Berlin Town	2,719	2,684	2,672	2,658	2,568	2,454	2,396	2,380	2,380	339	14.2%
Bolton Town	4,472	4,426	4,380	4,338	4,271	4,227	4,166	4,148	4,148	324	7.8%
Clinton Town	14,163	13,966	13,862	13,739	13,731	13,630	13,480	13,435	13,435	728	5.4%
Fitchburg City	40,050	39,966	39,832	39,865	39,733	39,396	39,196	39,102	39,102	948	2.4%
Gardner City	20,805	20,867	20,926	20,995	20,981	20,927	20,821	20,770	20,770	35	0.2%
Groton Town	10,585	10,465	10,381	10,205	10,002	9,841	9,610	9,547	9,547	1,038	10.9%
Harvard Town	6,051	6,063	6,072	6,091	6,090	6,062	6,000	5,981	5,981	70	1.2%
Hubbardston Town	4,422	4,344	4,264	4,214	4,144	4,066	3,942	3,909	3,909	513	13.1%
Lancaster Town	6,970	6,832	6,724	6,606	6,534	6,428	6,418	6,382	7,380	588	9.2%
Leominster City	41,549	41,719	41,826	41,874	41,876	41,709	41,402	41,303	41,303	246	0.6%
Lunenburg Town	10,010	10,003	9,959	9,870	9,772	9,648	9,455	9,401	9,401	609	6.5%
Pepperell Town	11,412	11,439	11,448	11,405	11,386	11,358	11,191	11,142	11,142	270	2.4%
Princeton Town	3,522	3,515	3,492	3,489	3,459	3,417	3,367	3,353	3,353	169	5.0%
Shirley Town	7,661	7,627	7,590	7,577	7,544	7,736	7,630	7,616	6,373	45	0.6%
Sterling Town	7,847	7,754	7,726	7,675	7,569	7,440	7,297	7,257	7,257	590	8.1%
Templeton Town	7,696	7,477	7,308	7,233	7,140	6,981	6,837	6,799	6,799	897	13.2%
Townsend Town	9,327	9,310	9,337	9,353	9,300	9,261	9,215	9,198	9,198	129	1.4%
Westminster Town	7,422	7,355	7,287	7,247	7,150	7,057	6,940	6,907	6,907	515	7.5%
Winchendon Town	10,146	10,084	10,016	9,971	9,914	9,766	9,646	9,611	9,611	535	5.6%

Note: The April 1, 2000 Population Estimates Base reflects modifications to the Census 2000 population as documented in the Count Question Resolution program, updates from the Boundary and Annexation Survey, and geographic program revisions. Dash (-) represents zero or rounds to zero.

**Cumulative Estimates of the Components of Population Change for Counties of Massachusetts
April 1, 2000 to July 1, 2006**

Geographic Area	Total Population Change*	Natural Increase			Net Migration		
		Total	Births	Deaths	Total	Net International Migration	Net Internal Migration
Massachusetts	88,088	149,992	499,440	349,448	-89,812	200,155	-289,967
Barnstable County	2,586	-5,000	12,358	17,358	8,171	2,510	5,661
Berkshire County	-3,836	-1,935	7,866	9,801	-1,466	1,079	-2,545
Bristol County	10,701	9,865	41,722	31,857	2,526	5,294	-2,768
Dukes County	528	137	957	820	439	314	125
Essex County	12,539	18,544	59,358	40,814	-3,783	18,451	-22,234
Franklin County	648	176	4,219	4,043	713	743	-30
Hampden County	4,294	7,415	35,977	28,562	-1,550	8,527	-10,077
Hampshire County	1,218	531	7,911	7,380	1,172	3,128	-1,956
Middlesex County	622	44,378	115,544	71,166	-46,604	66,138	-112,742
Nantucket County	720	495	900	405	256	353	-97
Norfolk County	4,445	15,795	51,450	35,655	-9,510	16,840	-26,350
Plymouth County	20,801	13,888	39,502	25,614	8,545	5,656	2,889
Suffolk County	-2,197	25,798	59,278	33,480	-66,358	53,865	-120,223
Worcester County	35,019	19,905	62,398	42,493	17,637	17,257	380

* Total population change includes residual - see "State and County Terms & Definitions"

Note: The April 1, 2000 Population Estimates base reflects changes to the Census 2000 population from the Count Question Resolution program and geographic program revisions. Dash (-) represents zero or rounds to zero. (X) Not applicable